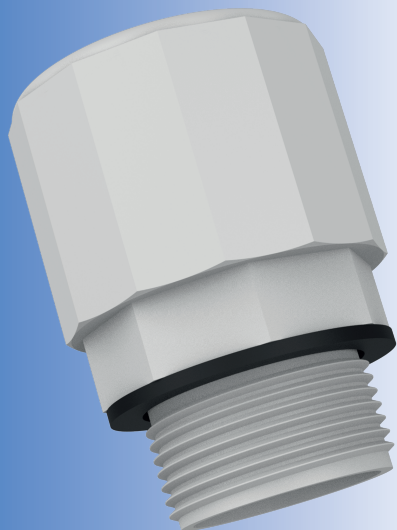


Enclosure Couplers Polyamide

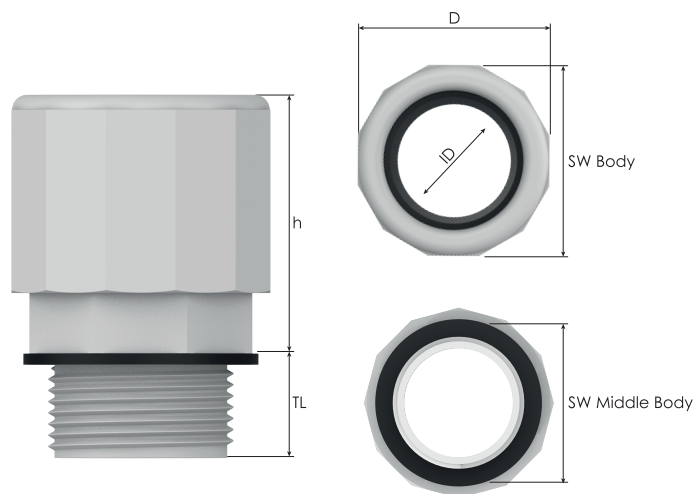


Enclosure Couplers

- Halogen free.
- No toxic fumes when involved in a fire.
- For conduit tubes.
- One side with standard metric threads and special fitting for conduit tubes on the other side.

Technical Details

Material	Fitting	Polyamide 6 Halogene free
	Seal	TPE Halogene free
Ingress Protection Rating		IP 67
Operating Temperature		Permanent -20 °C to +80 °C
Thread Type		Metric, according to EN 60423 and EN 62444
Accessories		• Lock nuts
Remarks		• We recommend the use of lock nuts to ensure IP rating for rough surfaces or through holes. • Accessories must be ordered separately.



Thread Type **METRIC** acc. to EN 60423

Outer Thread Size (Male)	For Conduit Nominal Size	Outer Thread Length	Spanner Width		Outer Ø	Inner Ø	Height	Part Number	Minimum Order Quantity
			Body	Middle Body					
		TL mm	SW Body mm	SW Middle Body mm	D mm	ID mm	H mm	RAL 7035 light grey	
M16x1,5	16,0	14,0	26	21	26,3	16,5	34,5	BRCF-01	1500
M20x1,5	20,0	14,0	30	25	31,1	20,5	33,6	BRCF-02	1000
M25x1,5	25,0	14,0	35	30	35,7	25,1	34,7	BRCF-03	750
M32x1,5	32,0	14,0	42	37	43,0	32,6	34,5	BRCF-04	500
M40x1,5	40,0	19,0	50	45	51,5	40,4	42,2	BRCF-05	350
M50x1,5	50,0	19,0	61	55	63,4	50,7	42,1	BRCF-06	200
M63x1,5	63,0	19,0	74	68	77,2	58,2	42,2	BRCF-07	150